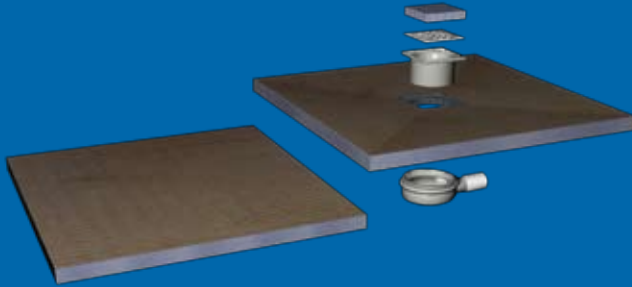




Now including Pro-Seal  
Pre-Mix Tape Sealer  
for easier installation

MANUFACTURING INNOVATION



# Installation guide

For Concept Shower Tray Kits 3 & 6

V2

**Parts supplied**

- |   |  |   |   |
|---|--|---|---|
| <p>A</p>  <p>1 x Shower Tray</p>                      | <p>B</p>  <p>1 x Shower Tray Extension</p>        | <p>C</p>  <p>1 x Shower Drain Base</p>         | <p>D</p>  <p>1 x Shower Drain Connector</p>        |
| <p>F</p>  <p>1 x Shower Drain Internal Bowl</p>      | <p>G</p>  <p>1 x Shower Drain Internal Dome</p>   | <p>H</p>  <p>1 x Shower Drain Top</p>          | <p>I</p>  <p>1 x Shower Drain Finishing Grate</p> |
| <p>J</p>  <p>1 x Fix-KST Adhesive Bag (5kg)</p>      | <p>K</p>  <p>1 x Fix-MD Adhesive Tube (310ml)</p> | <p>L</p>  <p>1 x Waterproofing Tape (5m)</p>   | <p>M</p>  <p>1x Pro-SEAL Pre-MIX 0.5L</p>          |
| <p>N</p>  <p>2 x Waterproofing Internal Corner</p> | <p>O</p>  <p>1 x Wood Floor Primer (250ml)</p>  | <p>P</p>  <p>1 x Notched Adhesive Trowel</p> | <p>Q</p>  <p>1 x Protective Gloves</p>          |
| <p>R</p>  <p>1 x Disposable Tiling Aid</p>         | <p>S</p>  <p>1 x Lubricant</p>                  | <p>T</p>  <p>1 x Paintbrush</p>              |   |

## Tools required (not supplied)

- Additional Paint Brush (wood floors only)
- Pencil
- Hard Point Saw
- Eye Protection
- Bucket
- Solvent Weld Waste Adhesive
- Measuring Jug
- Tape Measure
- Straight Edge
- Junior Hacksaw
- Breathing Protection
- Level
- Sealant Gun

## Important Information

### **PLEASE READ THESE INSTRUCTIONS THOROUGHLY BEFORE STARTING INSTALLATION.**

The waste pipe must run in the same direction as your floor joists so please check your joists before starting installation.

Check the pack and make sure you have all the parts listed.

If the shower tray (A) or shower tray extension (B) have slightly damaged edges there is no need to return the product as these can easily be repaired and most minor damage will naturally be covered during installation. Should you need to patch a repair that won't be naturally covered you should do so when you complete steps 16 and 17 in exactly the same way as you would seal a joint with waterproofing tape (L) and Pro-SEAL Pre-MIX tape sealer (M).

### **DO NOT PLACE STEP LADDERS OR HEAVY ITEMS ONTO THE SHOWER TRAY (A) OR SHOWER TRAY EXTENSION (B) AS THIS COULD PUNCH A HOLE THROUGH THE SURFACE.**

Certain spare parts and additional components are available if necessary and these can be obtained by calling the help line number at the end of the instructions.

When you are ready to start, make sure that you have the right tools to hand and that the installation area is clean and dry.

When drilling or fixing into walls or floors it is essential that you check for pipes and wires before commencing.

### **Site Preparation**

All floor types need to be clean, dry and dust free.

All floor types need to be as flat and level as possible.

Floor boards must be securely fixed down prior to installation.

All derivatives of wooden floors need to be treated with the wood floor primer (O) prior to installation. **PVA MUST NOT BE USED IN PLACE OF THE WOOD FLOOR PRIMER (O).**

This product is not suitable for use on MDF.

Prior to installation you will need to have access to a wastepipe in the correct position.

Please ensure that the wastepipe is accessible and any alterations to the floor are completed prior to installation.



### Step 1

(wood floors only)

If you are installing onto a wooden floor, make sure that the existing floor boards or sheets are fully secured down and as level and flat as possible. Paint the floor area where the shower will sit with the wood floor primer (O). PVA MUST NOT BE USED IN PLACE OF THE WOOD FLOOR PRIMER (O).

Leave to dry for at least 2 hours.

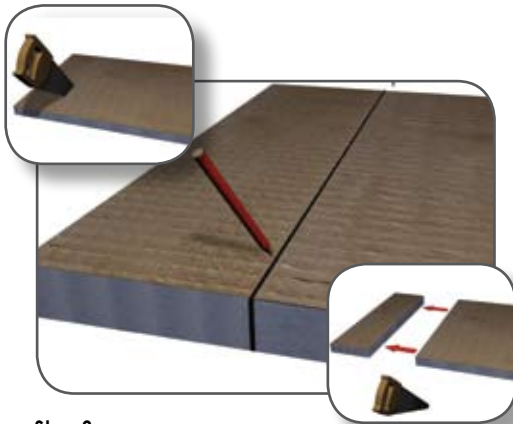


### Step 2

Measure the required overall length of the shower area with a tape measure. We would not recommend an area less than 1250mm in length because this would not allow a wide enough opening to get in and out of the shower easily.

For shower area lengths of 1250mm to 1450mm we would recommend fitting the 700mm front panel with 350mm pivoting splash panel.

For shower area lengths of 1450mm to 1850mm we would recommend fitting the 900mm front panel with 350mm pivoting splash panel.



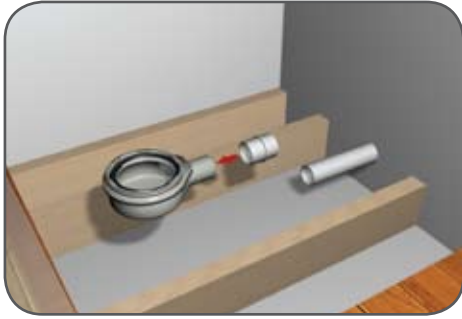
### Step 3

The overall pack length is 1850mm and any reduction required should be cut from the end of the shower tray extension (B). Carefully mark the cut position using a pencil and straight edge. Cut the tray carefully using a hand point saw. Lay the shower tray (A) and shower tray extension (B) into the required position to check the fit. Through the drain in the shower tray (A) mark the floor to show where the drain will sit. Carefully remove the shower tray (A) and shower tray extension (B) and store somewhere safe.



### Step 4

Remove flooring as necessary to carry out works to the wastepipe. Please note that if there is a joist in the way of the shower drain base (C) you will need to consult a professional joiner or structural engineer for advice.



### Step 5

For water to drain away properly, the wastepipe must have a fall of at least 3cm per metre. Make any alterations to your wastepipe to meet the position marked in step 3. The wastepipe must be properly supported to hold its own weight and that of the shower drain base (C).

Spread solvent weld adhesive around the inside of the shower drain connector (D). Push the shower drain base (C) onto the shower drain connector (D) with a twisting action. Spread solvent weld adhesive around the inside of the opposite end of the shower drain connector (D) and then slide onto the wastepipe with a twisting action. Once the solvent weld has set; pour water down the drain to check that the waste is not blocked and that there are no leaks. Replace the flooring ensuring that an adequate hole has been cut to allow for the shower drain base (C) to be exposed through the floor. Smear some lubricant (S) around the black rubber seal on the shower drain base (C).



### Step 6

Measure the shower drain base (C) position on the floor and mark this onto the relevant piece of plywood. Using a jigsaw cut a hole in the plywood so that the shower drain base (C) and shower drain connector (D) will be exposed through the new floor. Please note: The hole size should be no bigger than 180 x 180mm.



### Step 7

Put on the protective gloves (Q) and wear eye and breathing protection.

Mix the 5kg bag of Fix-KST adhesive (J) with approximately 1 Litre of water in a clean bucket which will give the adhesive a stiff consistency.

Spread the Fix-KST adhesive (J) onto the floor of the shower position and drag the notched adhesive trowel (P) across the surface. The notched adhesive trowel (P) will make a ribbed pattern which will leave just the right amount of adhesive on the floor.



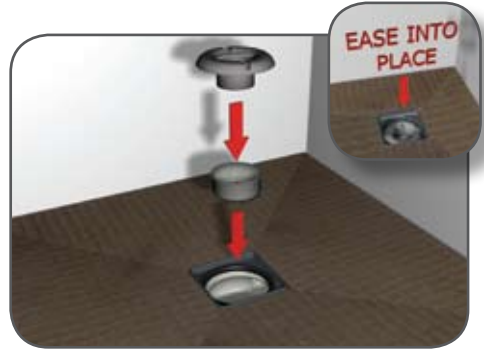
### Step 8

Place the shower tray (A) into position and bed down onto the adhesive cement. Check that the shower tray (A) is level in both directions using a suitable level.



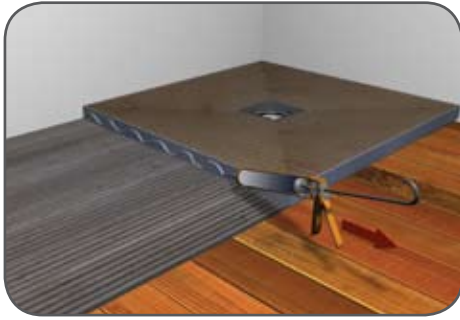
### Step 9

Put your fingers through the drain hole in the shower tray (A). Push down on the shower tray (A) and pull the shower drain base (C) upwards until it clicks into place into the drain hole in the shower tray (A).



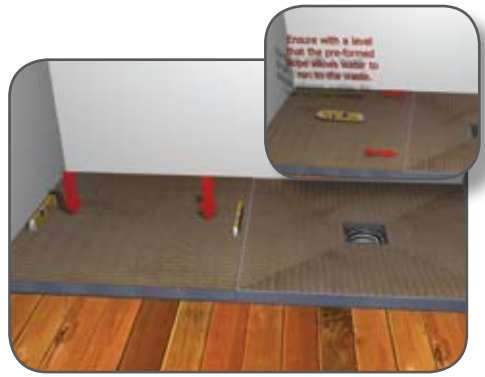
### Step 10

Ease the shower drain internal bowl (F) into the shower drain base (C). Ease the shower drain internal dome (G) into the shower drain base (C). When you have finished you can remove the protective gloves (Q) and eye and breathing protection.



### Step 11

Open the Fix-MD adhesive tube (K) and squeeze a wavy line of adhesive along the edge of the shower tray (A) that will join with the shower tray extension (B) using a sealant gun.



### Step 12

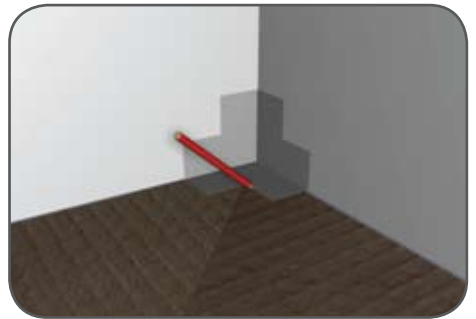
Place the shower tray extension (B) into position and bed down onto the adhesive. The shower tray extension (B) needs to be level across the width of the tray but have a slight slope on the length towards the waste to allow water to run towards the drain. The slope is pre-formed into the shower tray extension (B) so all you need to do is make sure that end of the shower tray extension (B) is completely flat against the end of the shower tray (A). Check with a level that you have maintained the slight slope on the shower tray extension (B).

Leave to set for approximately 3 to 5 hours.



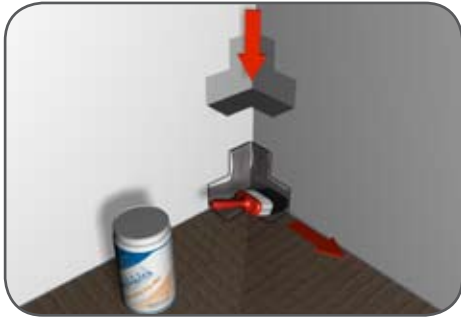
### Step 13

From the roll of waterproofing tape (L) cut three pieces the width of the shower area and one piece the length of the shower area. If the shower area is not wall to wall and is having a glass side panel you only need two pieces the width of the shower area not three.



### Step 14

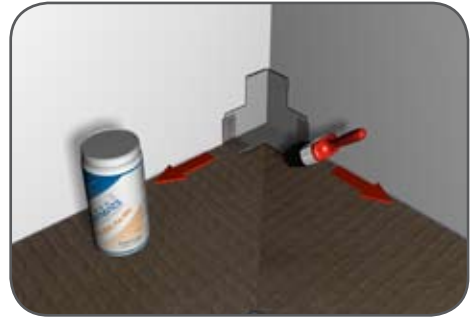
Temporarily place the waterproofing internal corners (N) into position and mark around them with a pencil. Once you have marked they can be removed. This is to show where you need to apply the Pro-SEAL tape sealer (M).



### Step 15

Put on the protective gloves (Q) and wear eye and breathing protection.

Put on the protective gloves (Q) and wear eye and breathing protection. Using the Pro-SEAL Pre-MIX tape sealer (M) and paintbrush (T), apply a thin layer of Pro-SEAL tape sealer (M) to the internal corners of the shower area, slightly bigger than the pencil line marked in step 14.



### Step 16

Place the waterproofing internal corners (N) into the internal corners of the shower area and push firmly into the Pro-SEAL tape sealer (M). Apply a further thin layer of Pro-SEAL tape sealer (M) over the edges of the waterproofing internal corners (N).



### Step 17

Where the shower area meets the wall apply a thin layer of Pro-SEAL tape sealer (M) to the shower area and the adjoining wall approximately 60mm wide on both. Apply a thin layer of Pro-SEAL tape sealer (M) across the joint between the shower tray (A) and the shower tray extension (B) to a width of approximately 120mm.

If the shower area is not wall to wall and is having a glass side panel you only need one waterproofing internal corner (N) not two.



### Step 18

Place the strips of waterproofing tape (L) previously cut in step 12 along the edges of the shower area, folding half up the wall and half on the shower area as you go. Press firmly into the Pro-SEAL tape sealer (M) and the tape should also overlap the waterproofing internal corners (N). Run the final strip of waterproofing tape (L) across the joint between the shower tray (A) and the shower tray extension (B) making sure that it overlaps the tape along the edges. When you have finished you can remove the protective gloves (Q) and eye and breathing protection.

### **Step 19**

**IMPORTANT!** Apply a further thin layer of Pro-SEAL Tape Sealer (M) over the tape & corners to fully impregnate the tape.

### **Step 20**

Leave to set for approximately 12 hours after which the tray is ready for tiling.

Steps 19, 20, 21 & 22 are after the Important Tiling Advice.

## **Important Tiling Advice**

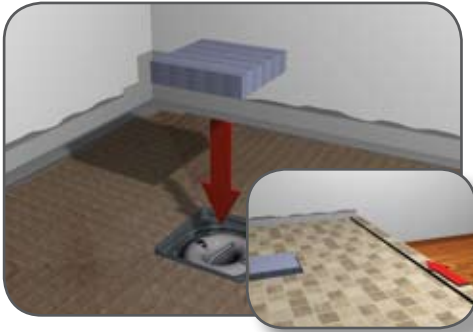
**IT IS ESSENTIAL THAT YOU DO NOT USE A READY MIXED TILE ADHESIVE.**

**FLEXIBLE CEMENT BASED POWDERED ADHESIVE MUST BE USED WITH SHOWER CONCEPT TRAYS.**

The shower tray (A) has slopes towards the drain pre-formed into the tray and these must be maintained when tiling as does the slope on the shower tray extension (B).

If you use tiles that are larger than 100mm it is necessary to cut the tiles along the same lines as are pre-formed into the shower tray (A) to maintain the slope. For best results and ease of installation we would recommend mosaics or tiles of 50mm to 100mm.

Elements shower concept trays are perfect for use with electrical under tile heating due to its excellent thermal properties. It is however essential that you check with the manufacturer that their product is entirely suitable for the area that you intend to install it in. If you are installing under tile heating it is essential that you consider any areas that will need products fixed to the floor for example shower screens. Avoid installing under tile heating directly below any fixing point to avoid the risk of screwing through the heating.



### Step 19

Place the disposable tiling aid (R) into the shower drain hole on the shower tray (A). The tiling aid (R) provides the edge that needs to be tiled up to whilst protecting the drain from debris.

After tiling the base of the shower area, we recommend that you add a further narrow border of tiles approximately 30mm to 40mm wide, along the top of the outside edge to act as a water retainer, stopping water running out of the shower area.



### Step 20

After tiling the shower tray the shower drain top (H) can be fitted. Gently place the shower drain top (H) into the shower tray (A). Measure from the top of the finished tile to the top of the shower drain top (H). From the opposite end/ bottom of the shower drain top (H) mark the same distance as previously measured. Using a hard point saw, cut the excess from the bottom of the shower drain top (H). Depending on your cutting skill, it may be necessary to file or sandpaper the cut edge to make it completely flat.



### Step 21

Place a small blob of tile adhesive in the middle of all four sides of the shower drain hole in the shower tray (A). Gently ease the shower drain top (H) into position in the shower tray (A).

Leave to set for approximately 3 to 5 hours.



### Step 22

Fill the gap between the edges of the shower drain top (H) and the start of the tiles with the same grout used during tiling. Place the shower drain finishing grate (I) into position.

Leave to dry for at least 24 hours before using the shower.

**If you require any assistance or advice,  
please contact the Helpline on 0845 8 50 50 40**



Due to our commitment to continuous product development we reserve the right to alter specifications without notice. Products are guaranteed against manufacturing defects for the first purchaser only and the guarantee is non-transferable. Our liability under any guarantee expressed or implied is strictly limited to replacement of defective goods or a refund at our discretion and no consequential losses will be entertained. Proof of purchase will be required.

Abacus Direct,  
Jubilee Court, Copgrove,  
Harrogate, HG3 3TB, England  
**t:** 0845 850 50 40 **f:** 0845 850 50 30  
**e-mail:** [technicalsupport@abacusdirect.co.uk](mailto:technicalsupport@abacusdirect.co.uk)

[www.abacusdirect.co.uk](http://www.abacusdirect.co.uk)

