



installation instructions

Easi-Plan Trend Flush Plate

ref: EPPR-20-05CS / EPPR-20-05SC / EPPR-20-05BC / EPPR-20-05WC

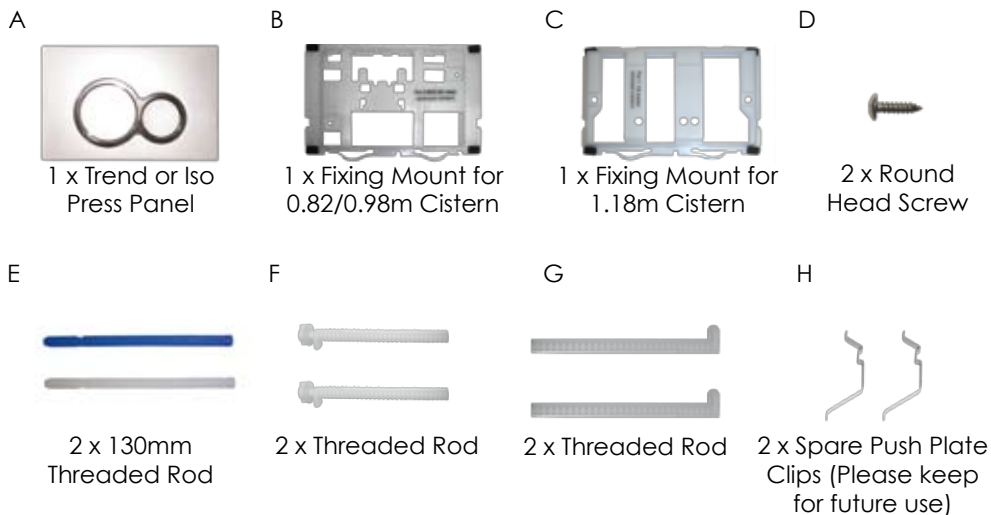
Easi-Plan Iso Flush Plate

ref: EPPR-25-05CS / EPPR-25-05SC / EPPR-25-05BC / EPPR-25-05WC

EASI-PLAN®

installation instructions

Parts supplied



Tools required (not supplied)

- Screwdriver PH3
- Flat Bladed Screwdriver
- Retractable Blade Knife

Important Information

PLEASE READ THESE INSTRUCTIONS THOROUGHLY BEFORE STARTING INSTALLATION.

Check the pack and make sure you have all the parts listed.

This Flush Plate can be used in conjunction with the following Easi-Plan Frames:

EPWC-05-1005 – Refer to Installation Type 1
EPWC-05-1505
EPWC-25-1005
EPWC-25-1505

EPWC-05-2005 – Refer to Installation Type 2
EPWC-25-2005

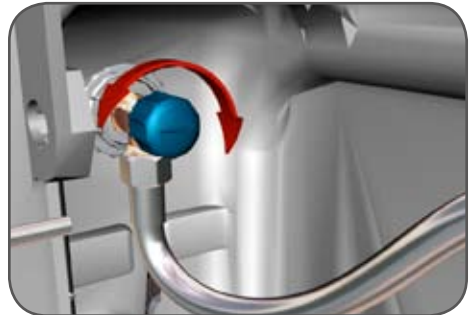
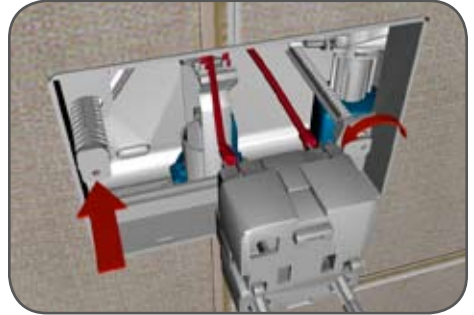
Please ensure that you follow the correct instructions to suit your choice of WC Frame.

Installation Type 1 (For 0.82m / 0.98m Concealed Cisterns)



Step 1

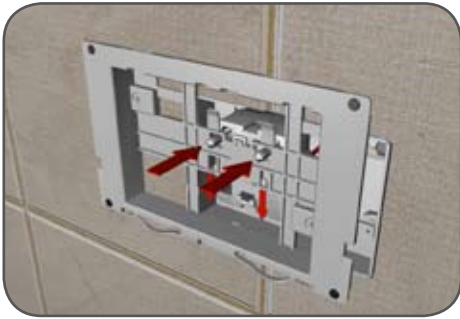
Discard the blanking plate from Corrugated Tile Guide & Flush Plate Mount and cut down the Corrugated Tile Guide & Flush Plate Mount so that it is flush with the tile using a Retractable Blade Knife.



Step 2

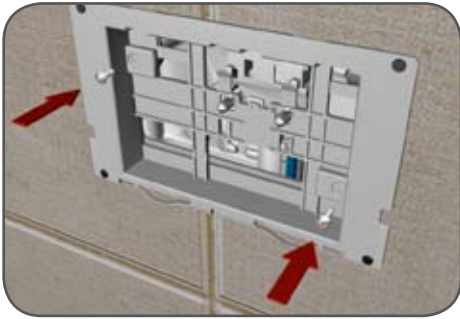
Attach two White Nylon Rods (G) attached to the Corrugated Tile Guide. These should then be adjusted so that they are approximately 5mm forward of the front face of your tile. Fix them back into position with a quarter turn anticlockwise.

At this stage you can now activate the water supply to the frame at the isolation valve within the cistern either by hand or with a flat bladed screwdriver.



Step 3

Take the Fixing Mount for 0.82/0.98m Cistern (B) and clip the Push Mechanism Box to it by means of the three location slots on the Fixing Mount for 0.82/0.98m Cistern (B).



Step 4

Attach the Fixing Mount for 0.82/0.98m Cistern (B) to the two White Nylon Rods using two Round Head Screws (D).

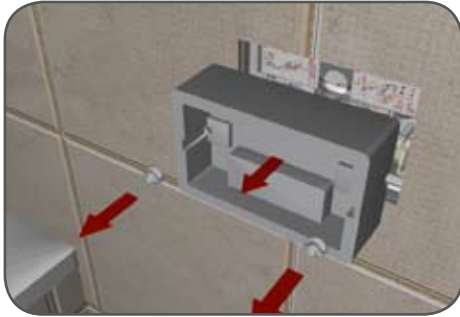


Step 5

Hook the left hand side of the Press Panel (A) over the Fixing Mount for 0.82/0.98m Cistern (B) and push gently to the right so that it clips and holds in position.

Note: The left Button is for full flush and the right Button is for partial flush.

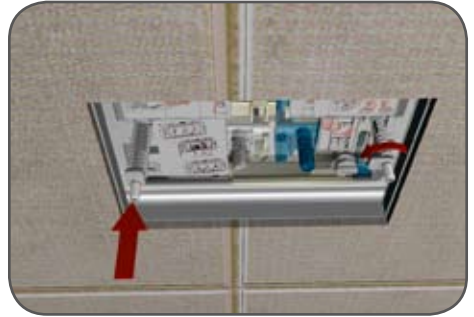
Installation Type 2 (For 1.18m Concealed Cisterns)



Step 1

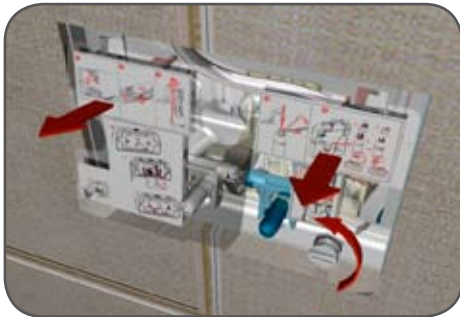
Remove the two Nylon Nuts holding the Foam Tile Guide to the front face of the cistern and put to one side. The Foam Tile Guide can now be discarded.

Note: A spare set is included if required, Part F.



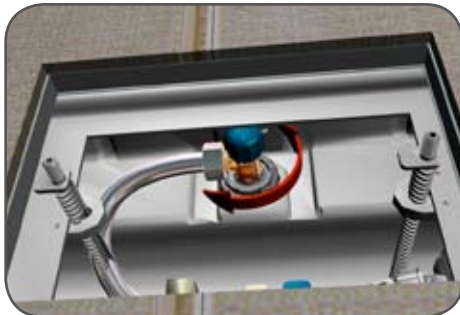
Step 2

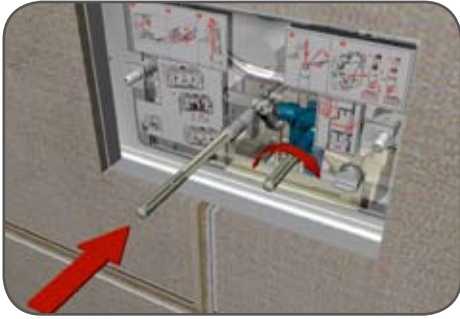
Locate two White Nylon Rods attached to the Cistern fitted during the installation of the WC Frame. Unclip each by rotating the White Nylon Rod a quarter turn anti-clockwise. These should then be adjusted so that they are approximately 5.5mm – 9.5mm forward of the front face of your tile. Fix them back into position with a quarter turn anticlockwise.



Step 3

Unlock and release the clear plate as indicated. At this stage you can now activate the water supply to the frame at the isolation valve within the cistern either by hand or with a flat bladed screwdriver. Re-attach the clear plate, ensuring that the arms are located against the corresponding siphon hooks and that the female (see Fig. 1)





Step 4
Screw the two 130mm Threaded Rods (E) into the corresponding colour arm mechanism fixed to the Clear plate (see Fig. 1) then re-attach the clear plate and lock into position, ensuring that the arms are located against the corresponding colour siphon hooks (see Fig. 2).



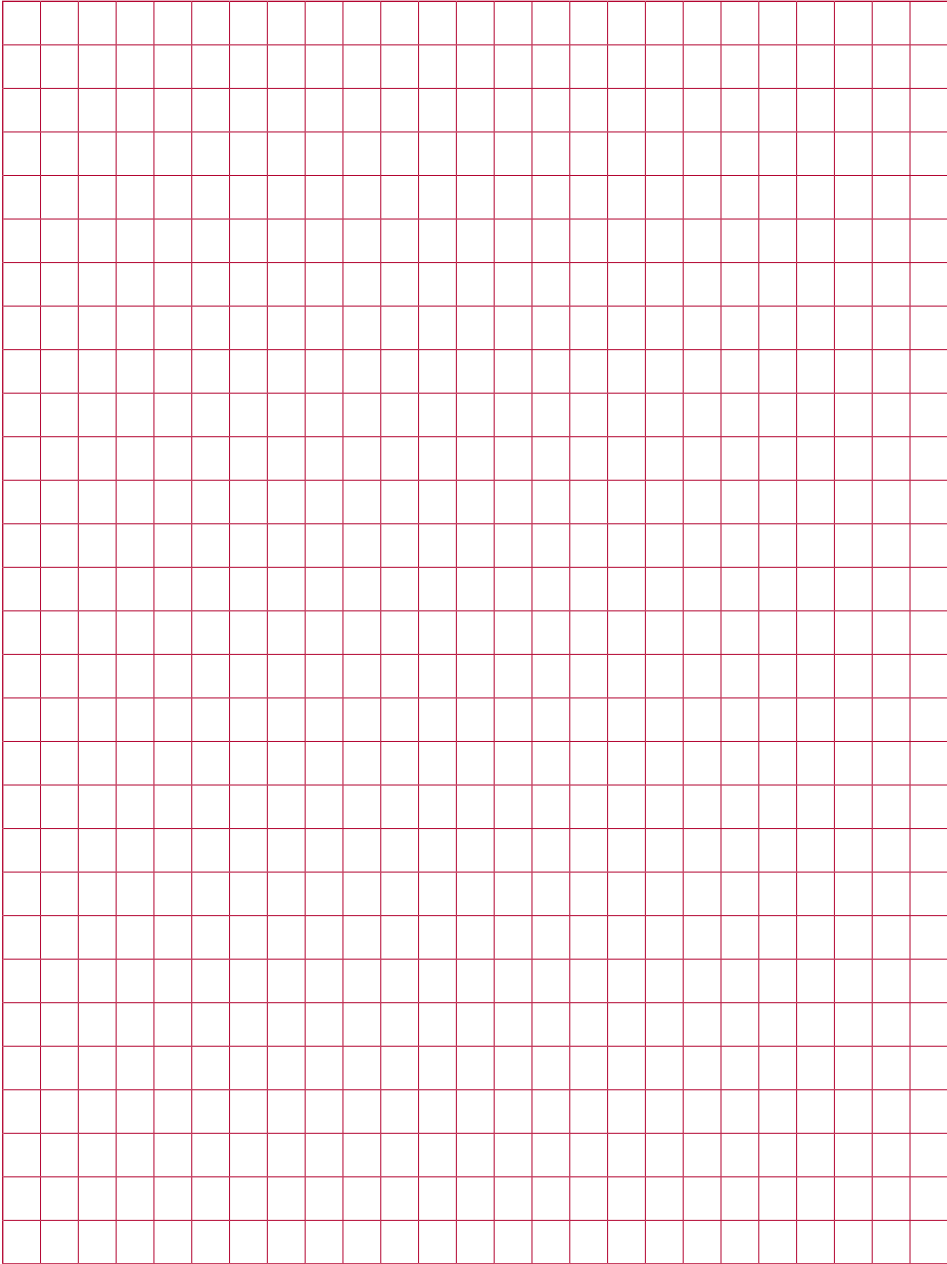
Step 5
Attach the Fixing Mount for 1.18m Cistern (C) to the 2 No. White Nylon Rods using the 2 two Nylon Nuts from Step 1. Ensure that the two 130mm Threaded Rods (E) are wound down sufficiently so that they protrude 20mm forward of the Fixing Mount for 1.18m Cistern (C).



Step 6
Hook the left hand side of the Press Panel (A) over the Fixing Mount for 0.82/0.98m Cistern (B) and push gently to the right so that it clips and holds in position.

Note: The left Button is for full flush and the right Button is for partial flush.

**If you require any assistance or advice,
please contact the Helpline on 0845 8 50 50 40**



Due to our commitment to continuous product development we reserve the right to alter specifications without notice. Products are guaranteed against manufacturing defects for the first purchaser only and the guarantee is non-transferable. Our liability under any guarantee expressed or implied is strictly limited to replacement of defective goods or a refund at our discretion and no consequential losses will be entertained. Proof of purchase will be required.

Abacus House,
Jubilee Court, Copgrove,
Harrogate, HG3 3TB, England
t: 0845 8 50 50 40 f: 0845 8 50 50 30
e-mail: info@abacusdirect.co.uk

www.abacusdirect.co.uk

